



Integrated, Service-Based Applications

DocuPeak provides a comprehensive document application platform that seamlessly integrates into your existing processes, portal, or line of business systems.

SaaS or On-Premise

DocuPeak applications can be delivered as a service, hosted in Webi**plex's** ultra-secure data centers, or installed on-premise. You can even start with hosted services, and later move to on-premise, or vice versa.

Built On Microsoft .NET Standards

DocuPeak is built upon Microsoft .NET Foundations, SQL Server, and standard Internet technologies. Extend your options without proprietary headaches.

Enterprise Application Tree

DocuPeak applications are created within a familiar tree structure. New applications are new branches, with their own security views. This allows for shared common entities (e.g. customer lists, vendors, etc.) and an incremental deployment platform.

“ I must admit that the more I test, learn, & look under the hood, that I am very impressed with what you have developed! I have licenses for [several other products]. Neither could be pushed to do the things that we need to accomplish. Even though there will be a little bit of “solution from the Webi**plex** paradigm”, I believe we will have very effective solutions. ”

Integrated cloud applications built rapidly, efficiently, and reliably with your own DocuPeak Application Tree

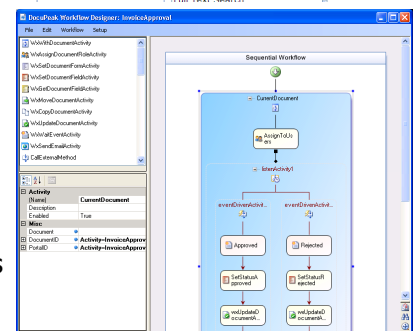
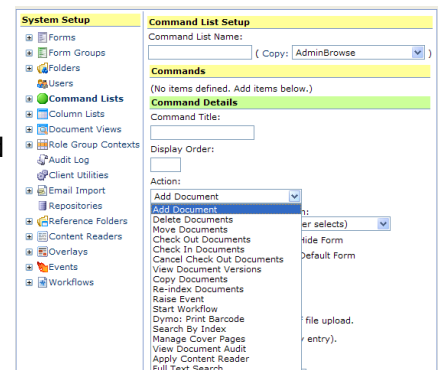
Webi**plex** DocuPeak embodies the next generation of rapid application development. With it's document-centric heritage, and application tree architecture, DocuPeak is your enterprise-wide foundation for developing departmental, customer or vendor facing, and internal business process Web-based applications.

Best of all, DocuPeak organizes all of your applications into familiar, coherent folder tree structure. You do not need to install a new server each time you create a new application. And, with our Webi**plex** Managed Hosting Services, you don't even need to install a server for the first application.

“Assemble and Configure” Application Development

DocuPeak provides an easy-to-use administration interface that provides all the tools necessary to build new applications and manage your application tree. Through this centralized interface, you can:

- Create document and data definitions, root folder, and repository structure.
- Set up automated capture (e.g. e-mail), auditing, and other capture methodologies.
- Configure content intelligence agents and specialized document display overlays.
- Configure document to document relationships and define external “reference folders”.
- Administer workflows and business process components.
- Administer what users can or cannot do in each document view.
- Configure user interface elements such as command buttons and document views for the user interface.



Filter: Updated Equals Value: Search all text:

Name	Request	Account	Date	Status	Permit Date	Request Number
Gelson, Jim	New Permit		5/1/2009	Active		23
Smithson, James	Use Permit		8/10/2008	Cancelled		6
Johnson, Jake	Use Permit		7/10/2008	Cancelled		5
Rennie, Robert	New Permit		5/6/2008	Active		1
Rennie, Robert	Use Permit		6/7/2008	Active		2
Rennie, Robert	Use Permit		6/8/2008	Active		3
Johnson, Jake	Use Permit		7/8/2008	Active		4
Smithson, Bill	Use Permit		8/10/2008	Active		7
Mogonagal, Joseph	Use Permit		7/15/2008	Active		8
Mogonagal, Joseph	Use Permit		7/16/2008	Active		9
Mogonagal, Joseph	Use Permit		7/17/2008	Active		10

Vertical Applications

DocuPeak applications have been created in numerous vertical applications.

- **Accounting:** AR/AP, Invoice Automation
- **Shipping/Supply-Chain:** Manifests, PODs
- **Government:** Citation management, customer payments
- **Mortgage/Lending:** Supporting documents, decisioning
- **Human Resources:** Employee records, resume receiving
- **Legal:** Court records, case files, discovery
- **Insurance:** Claims management, workflow
- **Education:** Student records, applications

Webiplex Professional Services

Webiplex uses, and recommends, a "phased, iterative" application development model:

- **Application Definition:** Determine and prioritize applications
- **Entity Analysis:** Business data and document relationships and requirements analysis
- **Process Analysis:** A review of the constituents (i.e. users) and their relationships.
- **Integration Analysis:** Which existing or other systems must be integrated.
- **Iteration:** Frequent reviews with client during implementation.

“ I've got to say, I've seen a lot of enterprise software and what you guys deliver makes sense. It's always very solid stuff. ”

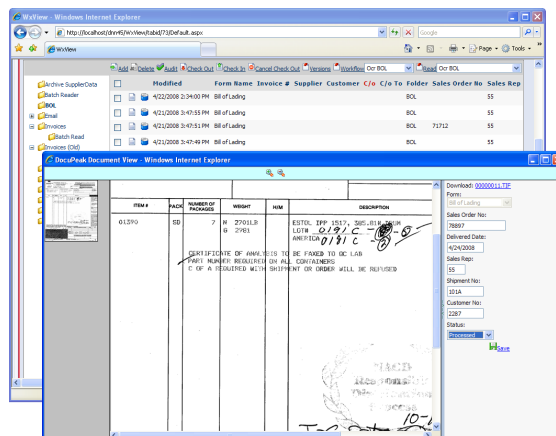
Case Study: Chemicals Distribution Supply Chain

A chemicals distribution company with offices in Washington and California has implemented DocuPeak with DotNetNuke, replacing a legacy, client-server document management system. Several hundred thousand documents were converted out of a legacy system into DocuPeak.

- Bills of lading (BOL) are scanned and sent to their DocuPeak repository via the DocuPeak Scan Bench.

- Key numbers (e.g. order number, sales rep number) are read from the scanned BOLs using DocuPeak Content Intelligence. These numbers are automatically stored in the document's data record.

- Nightly, a UNIX application generates a text report of all invoices for that day. DocuPeak Content



Intelligence is used to read the report, and create invoice documents by virtually printing (overlying) the invoice text onto a template image.

- Key numbers (e.g. the order number, etc.) are read from the text invoices using DocuPeak Content Intelligence. These numbers are automatically stored in the document's data record.
- Customer service personnel have an optimized search view of business documents – and can look up records by Google-like full text search, or field-level, or both at the same time. "discussion thread" field on each document.

Welcome to **Webiplex**

Webiplex was founded in 2006 to provide the most advanced rapid application development platform that is entirely Web based. Our heritage is in intensive document management applications, and our platform delivers decades of process knowledge to our customers. Through the application tree technology of DocuPeak, we aim to serve our customers beyond just a single installed application. We aim to provide a solution whose ROI continues to grow the more it is used.

Webiplex Corporate Offices

5001 Birch St. Suite #16
Newport Beach, CA 92660
(949) 861-4387

On the Web

<http://www.Webiplex.com>
feedback@webiplex.com

